

Sec. APPENDIX Aa.

ATTACHMENT OF CATV SYSTEMS TO POLES

The attached pole head diagrams are intended to illustrate mounting arrangements of CATV facilities to poles. They should not be construed as being wiring arrangements.

INDEX TO PLATES

- Plate 1 CATV and telephone cable on same side of pole.
- Plate 2 CATV and telephone cables on opposite sides of pole.
- Plate 3 CATV cable with strand mounted equipment on same side of pole as telephone cable.
- Plate 4 CATV and telephone cables on opposite sides of pole with strand mounted CATV amplifier.
- Plate 5 CATV and telephone cables on same side of pole with extension arm mounted amplifier or power supply above telephone cable.
- Plate 6 CATV and telephone cables on opposite sides of pole with crossarm mounted amplifier or power supply less than four feet below telephone cable.
- Plate 7 CATV cable mounted on extension arm above telephone cable.
- Plate 8 Top views showing climbing space.
- Plate 9 Top view showing climbing space.

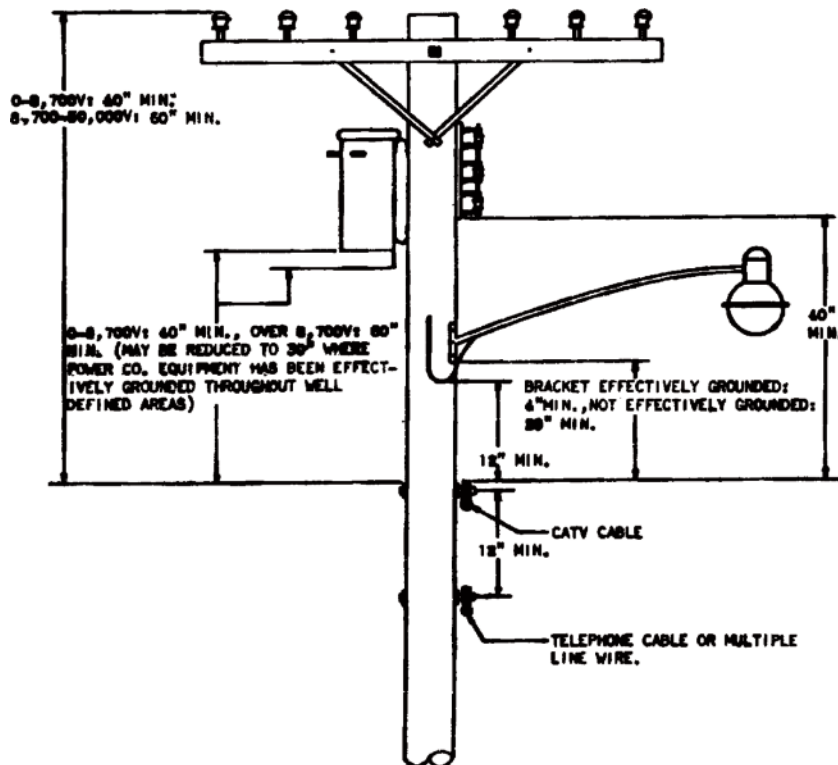


Plate 1

CATV and Telephone Cable on Same Side of Pole

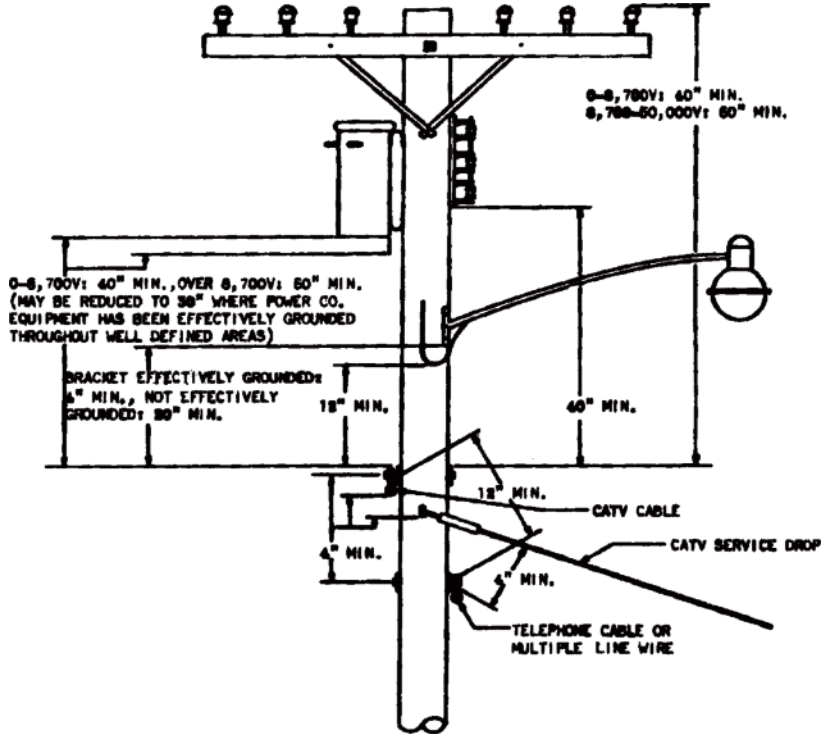


Plate 2

CATV and Telephone Cables on Opposite Sides of Pole

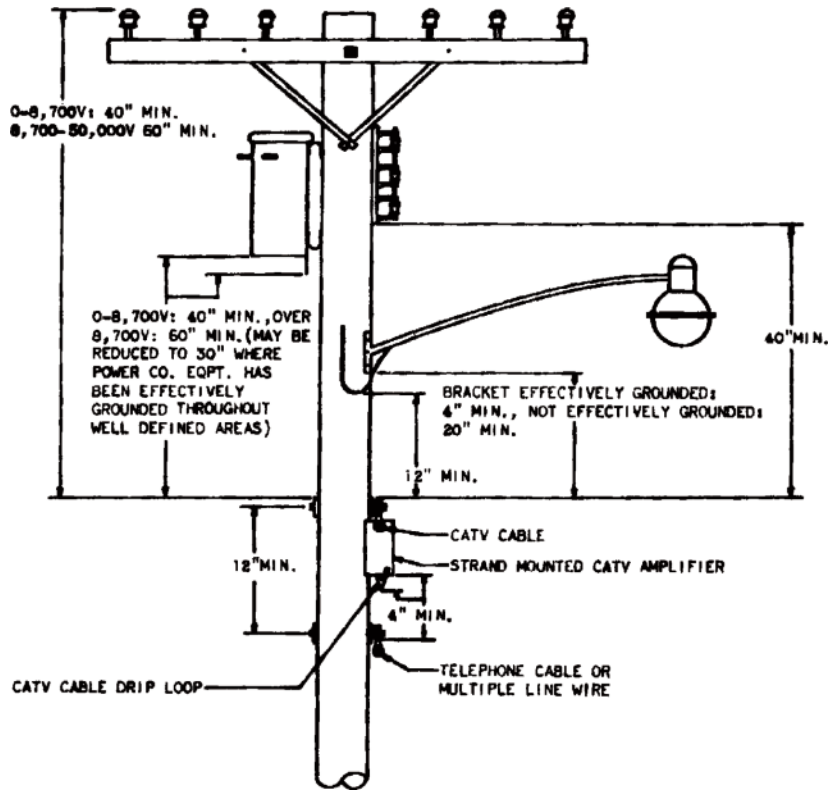


Plate 3

CATV Cable with Strand Mounted Equipment on Same Side of Pole as Telephone Cable

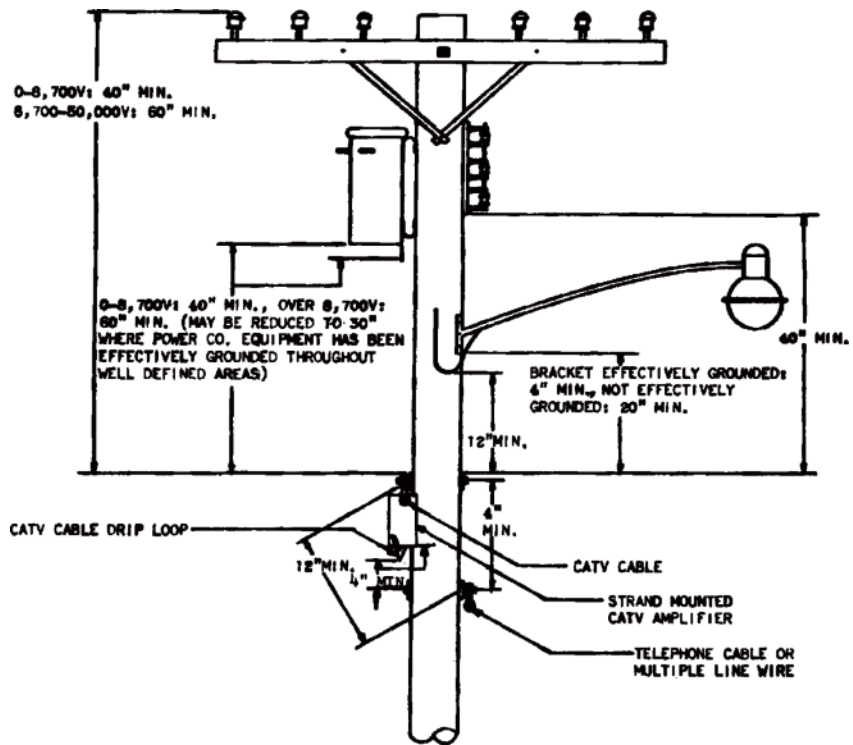


Plate 4

CATV and Telephone Cables on Opposite Sides of Pole with Strand Mounted CATV Equipment

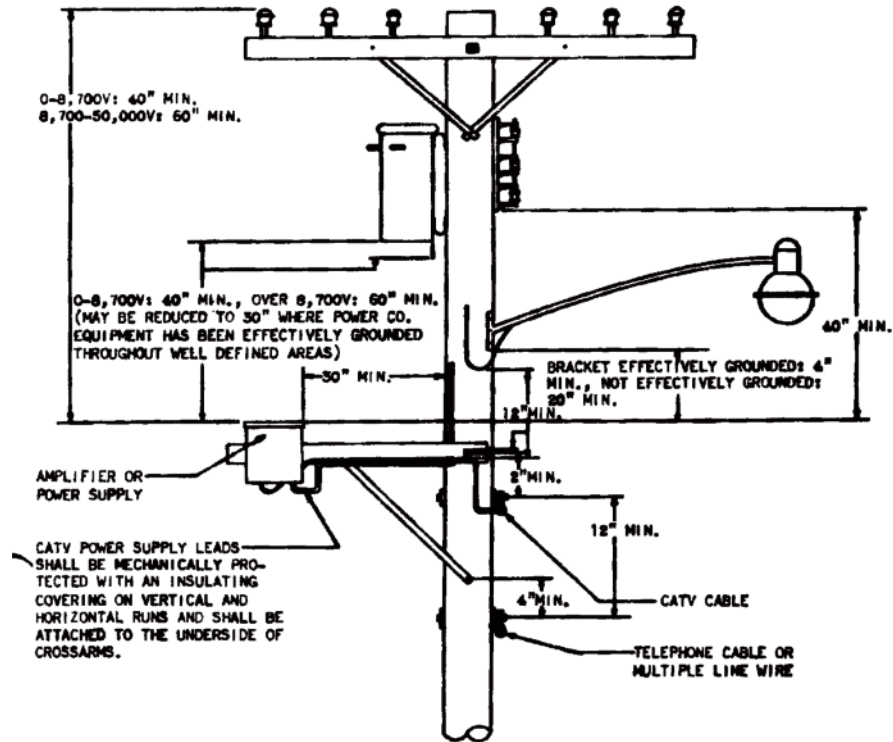


Plate 5

CATV and Telephone Cables on Same Side of Pole with Crossarm Mounted Amplifier and/or Power Supply above Telephone Cable

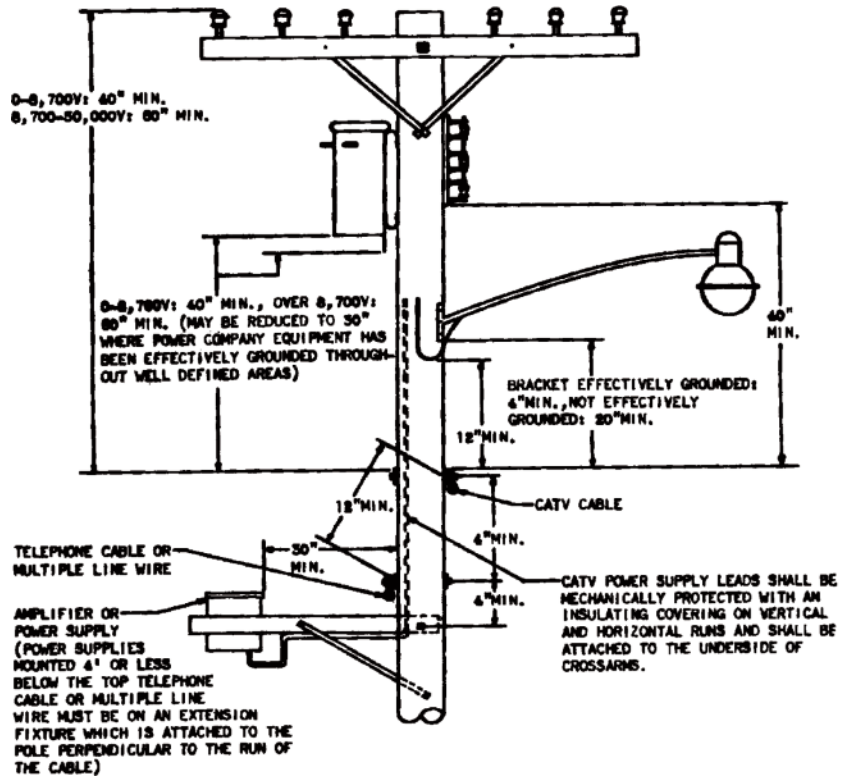


Plate 6

CATV and Telephone Cables on Opposite Sides of Pole with Crossarm Mounted Amplifier and Power Supply Less Than 4' Below Telephone Cable

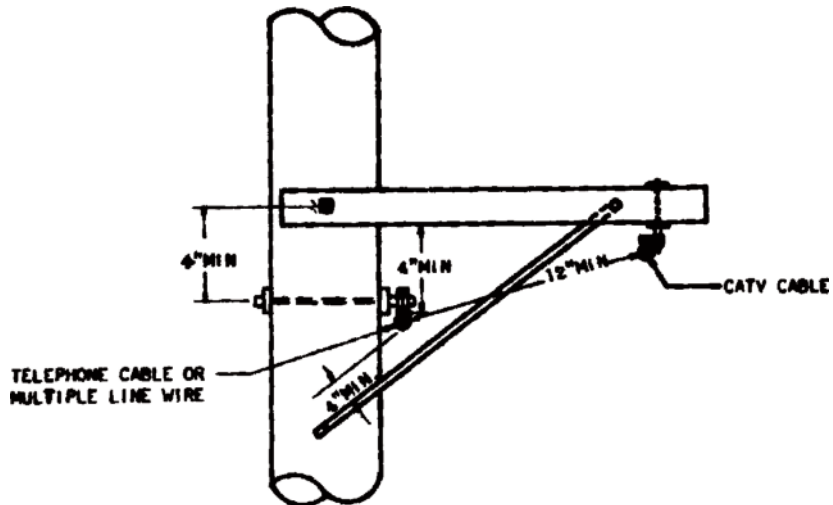


Plate 7

CATV Cable Mounted on Extension Arm Above Telephone Cable

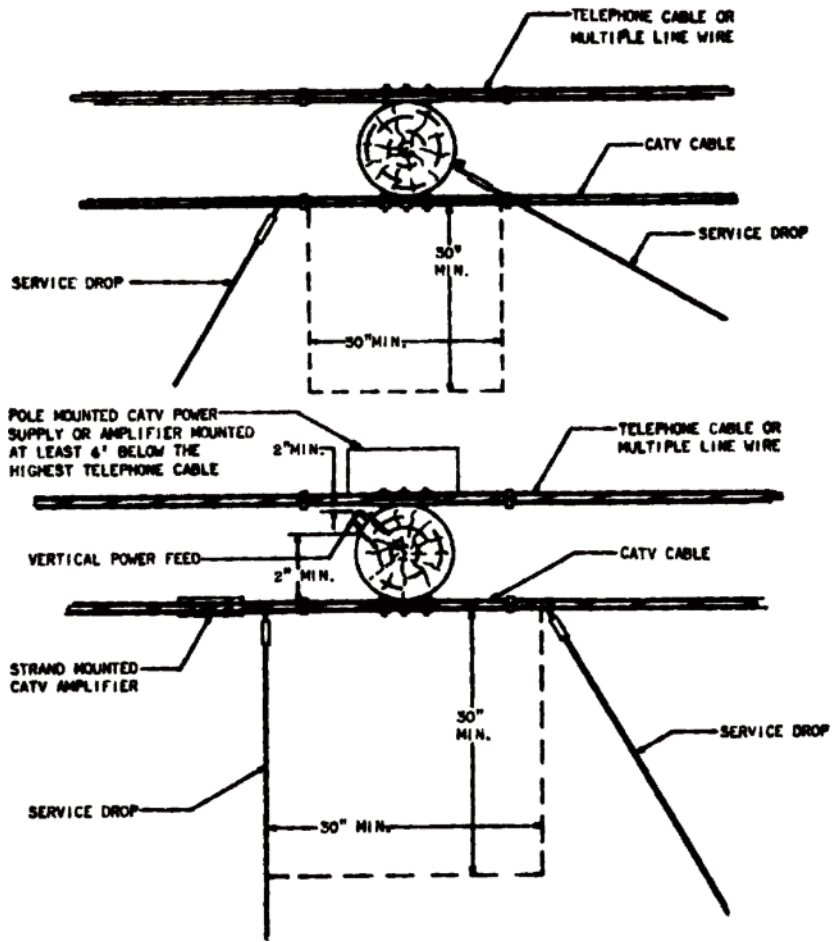
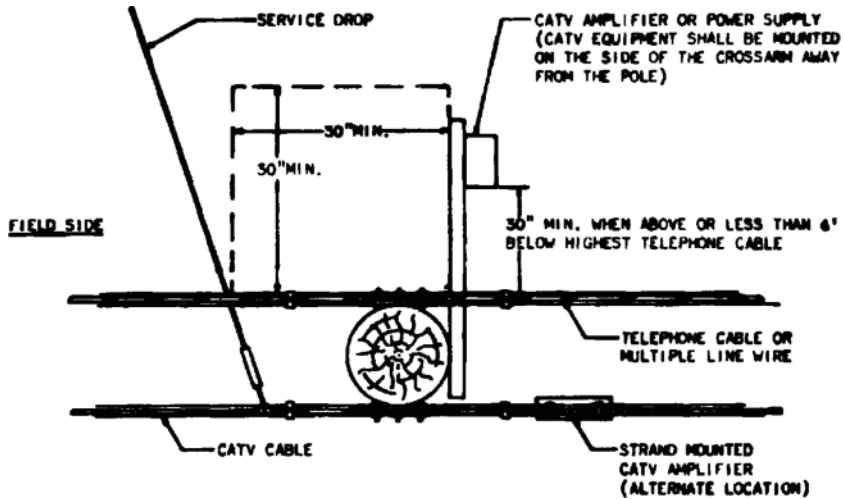


Plate 8

Top Views Showing Climbing Space



*Regulations of Connecticut State Agencies*

---

---

Plate 9

Top View Showing Climbing Space

(Effective November 25, 1969)